



TERRA NOVA

Eco-Lodge Design & Master Planners

Company Introduction

2023



Our Team

Key Leadership



Ashleigh
Lawrence
Founder & Managing Director

Ashleigh, the founder of Terra Nova, is an accomplished and results-oriented professional with a solid history of success in leading negotiations on multiple master planning projects in the eco-hospitality space, as well as overseeing financial and business development strategies.

Prior to joining Terra Nova, Ashleigh was the lead business development manager for the Mantis Group (part of the Accor Group) in the UK focusing on securing global eco-lodge opportunities outside of Southern Africa with particular emphasis in the Middle East region, where she secured multiple hotel management deals.

Ashleigh completed her Business Science Degree & Honours specialising in Finance and Accounting at the University of Cape Town and qualified as a South African Chartered Accountant at Deloitte in London. Her love for Africa, people and travel encouraged her to leave Deloitte and to join the Mantis Group in 2018 which is where she started a master planning division built around sustainability and innovation.

Her team comprises of well-established independent consultants which each bring their own level of expertise and experience to each project.



Copyright © 2022 by MILLO

Our Team

Key Consultants



Mantis Entertainment

Paul is the founder of Mantis Entertainment. Over the past decade he's been working with several talents including the adventurer and survival expert, Bear Grylls, to further enhance their personal brands.

Mantis Entertainment prides itself in developing location-based entertainment opportunities for these talents. Aside from just the entertainment side of the business, there is also a big focus on conservation. Paul's been involved in conservation all his life and as part of the overall offering, conservation consultancy services are included in their portfolio, along with film making, master planning services for eco lodging and adventure attractions, all of which fall under their Terra Nova business.

Paul is also the founder of Worldwide Experience and Vets Go Wild, two businesses focused on delivering conservation themed experiences for students from around the world. He's also a Non-Exec Director of Camp Kerala, one of the world's leading glamping companies based in the UK.



Millennia Architects

Millennia Architects is an architecture and design focused studio based in South Africa operating globally.

Specialising in the hospitality and eco-tourism industry, Millennia Architects provides innovative design solutions based on 2 key aspects; bespoke designs that are authentic to each unique region and integrated sustainable eco-systems that make it possible to develop projects in challenging locations with great potential.

The practice comprises a team of skilled professionals with the collective expertise to handle projects of any type and scale, spanning the lifespan of a project from inception to successful completion. The range of services includes master planning, project appraisal, design development, detail design, project documentation, project management, 3d visualization and rendering as well as drone imagery and data processing.



MI Designs

MI Designs Established in 1982, is an international design company that specialises in hotels, lodges, resorts, residential projects as well as retail and corporate design.

With over 30 years' experience in architectural and interior design, MI design employs a diverse group of talented architects, interior designers, graphic designers, photographers and 3D artists. Their Interior Design is rooted in modernist planning principles but is expressed in a timeless aesthetic.

MI Design offer a full house service from conceptualisation, manufacturing and procurement through to and including on-site project management and project completion. Their approach to interior design encompasses a creative customised and flexible design service. Their expertise and project management skills allow us to successfully undertake and offer a full turnkey design service.



Our Team

Preferred Partners



GILTEDGE



WATG



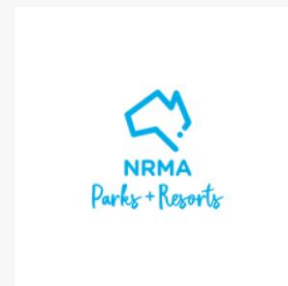
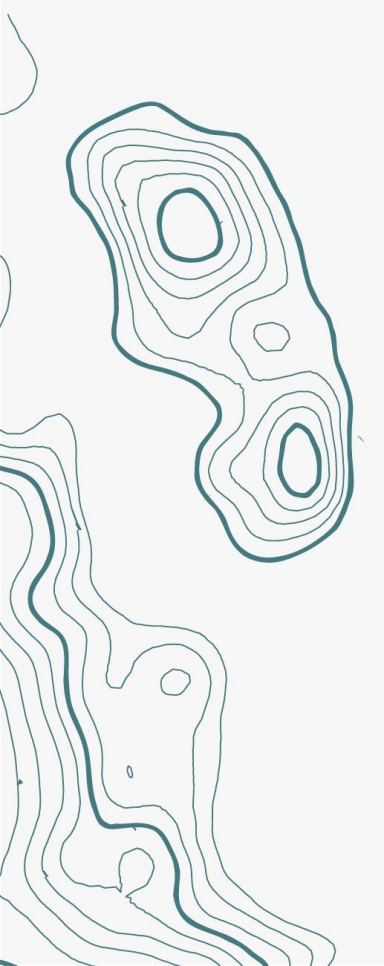
DUNCAN & GROVE



WORLD of GLAMPING

Projects fulfilled

Global footprint



Who we are



Our team has been rooted in Eco-Tourism for over three decades



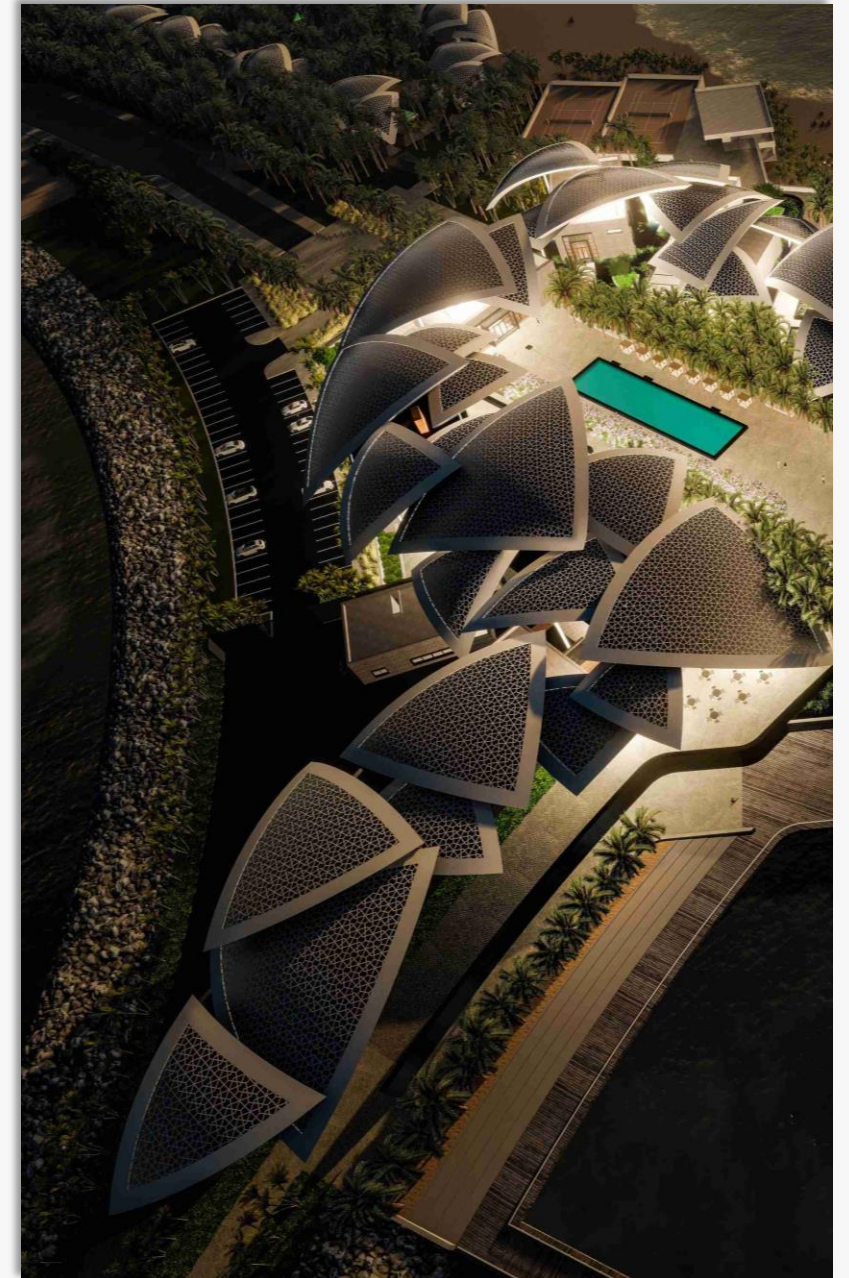
Welcome to Terra Nova

Terra Nova specialises in master planning and concept development in the eco and adventure tourism space.

Terra Nova was founded in 2022 by a team of professionals who for decades worked alongside renowned conservationist and hotelier, Adrian Gardiner.

Rewilding, the conservation of the land, and embracing communities bordering these assets all form part of Terra Nova's winning sustainability formula. All these elements are factored into the modelling of every new project we undertake. This unique eco-tourism DNA that has largely been borne out of Africa is now being exported to other parts of the world and Terra Nova is at the forefront of this expansion.

[Portfolio and more >](#)



What we do



Inspired and driven by innovation

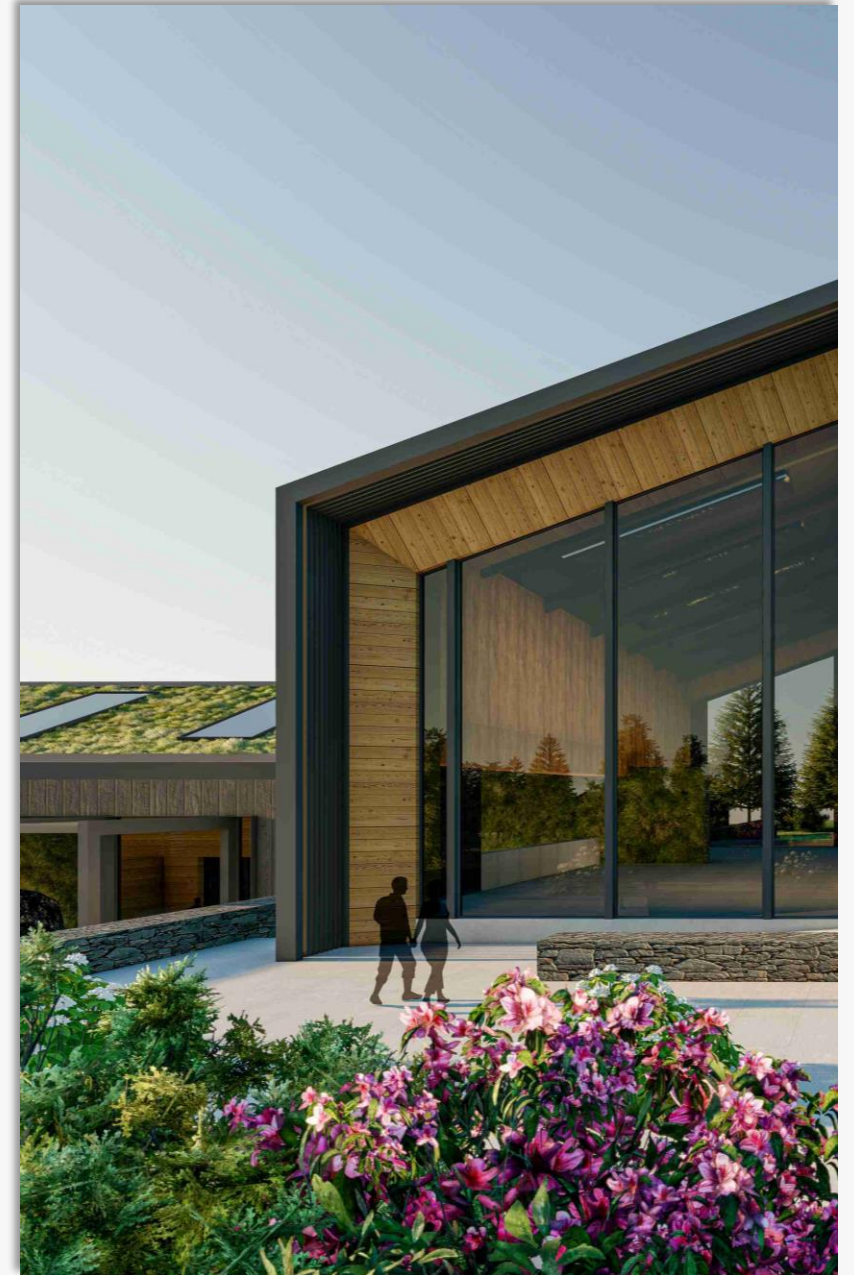
Creating for tomorrow's traveler

Our team comes with a combined three decades of experience, and are driven by a shared passion for innovation, guest experience and above all, conservation.

From green-to-brown field, Terra Nova provides design and concept solutions for clients seeking a detailed and comprehensive master plan for their tourism products.

Services

- Master planning
- Conservation Consulting (ancillary)
- Brand Entertainment Experiences (ancillary)
- Film Production (ancillary)





Master planning Services

Master planning



Specialising in
Eco Lodges,
Adventure Lodges &
Adventure Attractions

Start creating your vision with us

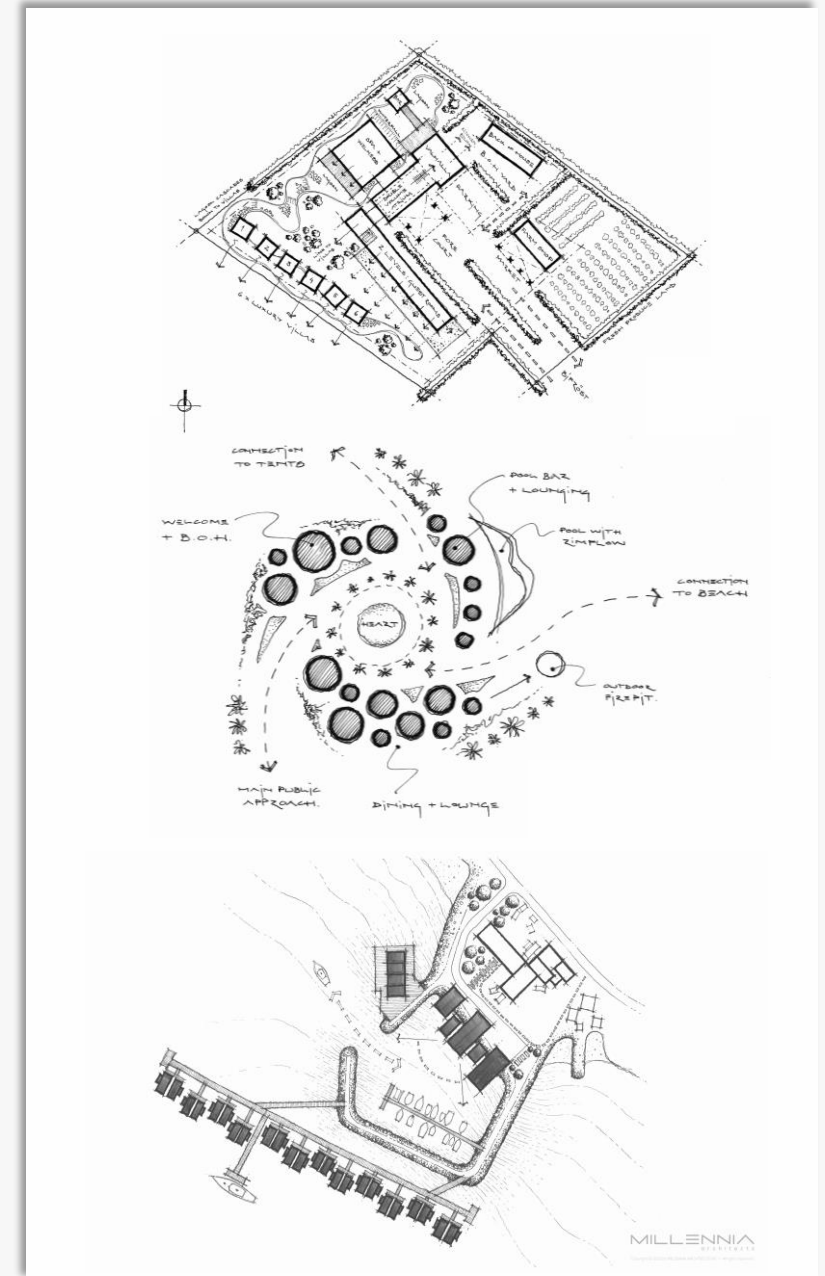
Terra Nova specialises in master planning and concept development in the eco and adventure tourism space.

We are passionate about delivering innovative and bespoke solutions to our clients to assist them in accommodating the travellers of tomorrow.

Master planning services

- Market Appraisal & Project Vision
- Vision & Concept Development
(Guest journey & Experience Curation)
- Architectural Conceptualisation
- Interior Theming & Concept
- Preliminary Cost Estimate
- Financial Projections

[Portfolio and more >](#)





Barbados

Walkers Reserve Eco-Resort

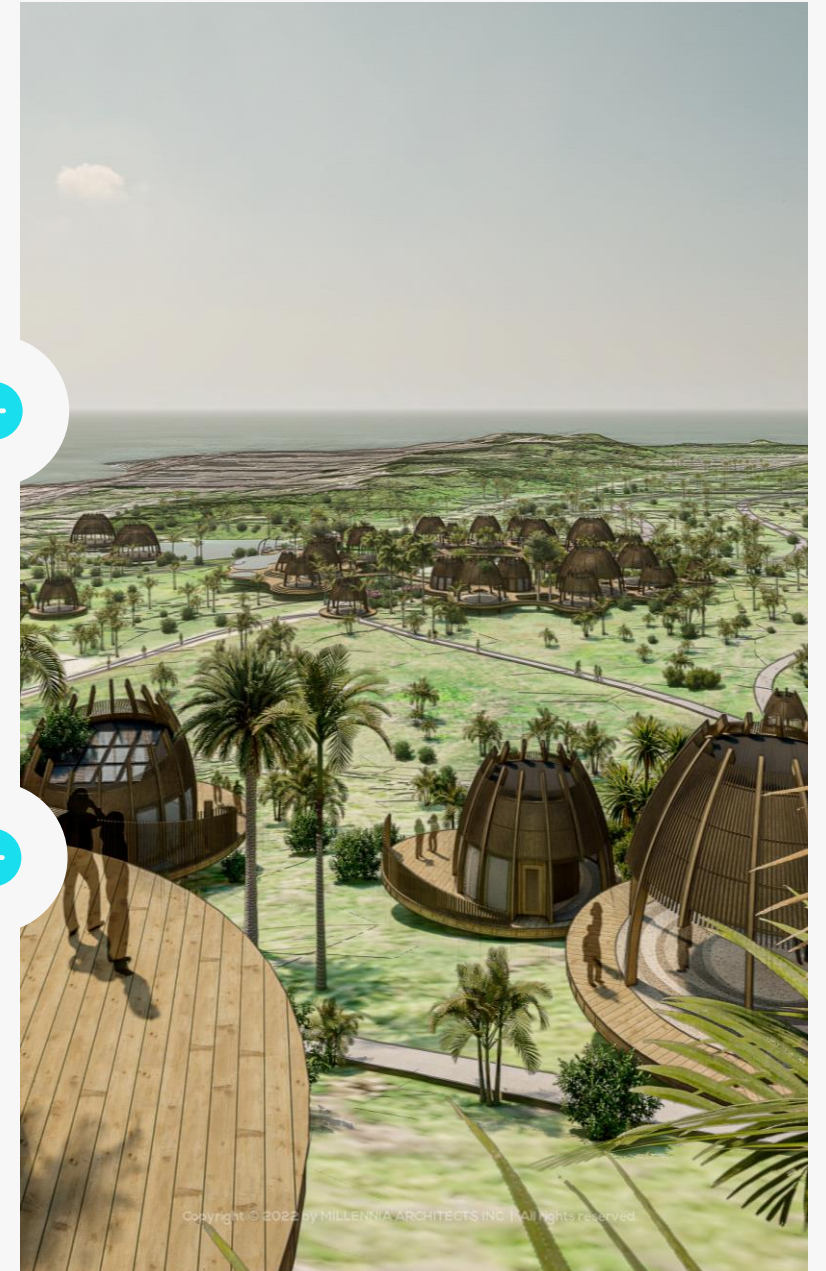
The project brief from the client was to envision the design of a total wellness eco escape on his existing property on the Eastern Shore of Barbados. This brief was realised in the form of an eco-lodge that will immerse guests in digital detox where healthy and mindful loving is achieved in harmony with the built structures.

The central theme of retreat, rehabilitation and restoration is embodied in every aspect of the guest experience with gestures and facilities relating to wellness practices, mindful engagement with nature and sustainable generation of food, water and power.

Key design objectives were to create an organic and biophilic design with an affinity to tented enclosures. Bird cage structures have been a strong influence throughout to avoid high construction costs both prefabricated options and modularization created the most efficient solution.

Facilities:

- Social hub for guest interaction
- Prominent wellness hub for therapeutic activities
- Multiple food & beverage offerings which provide a range of dining experiences
- Inclusion of farm to plate strategies for producing self-sustaining sustenance
- Self-sustaining systems for power generation, water availability and water disposal





Iceland

Geysir Spa Eco-Escape

The project brief from the client was to envision the design of a luxury eco hotel in the village of Laugarás within the Golden Circle region of Iceland. The hotel is to be based around a strong wellness influence with the geothermal spring nearby being incorporated into the site.

There is a strong desire that the guest experience is inspired by the Viking Gods and the architecture should incorporate opportunities for this to be achieved. Each zone of the hotel; sleeping, dining, gathering and wellness will be inspired by a Norse God or group of Norse Gods that embody the qualities of these zones.

Facilities:

- 3 food and beverage offerings
- A comprehensive Spa and Wellness Suite
- A central hub connecting all the zones together
- Inclusion of a water element making use of the geothermal spring nearby
- Back of house spaces
- Staff accommodation





Norway

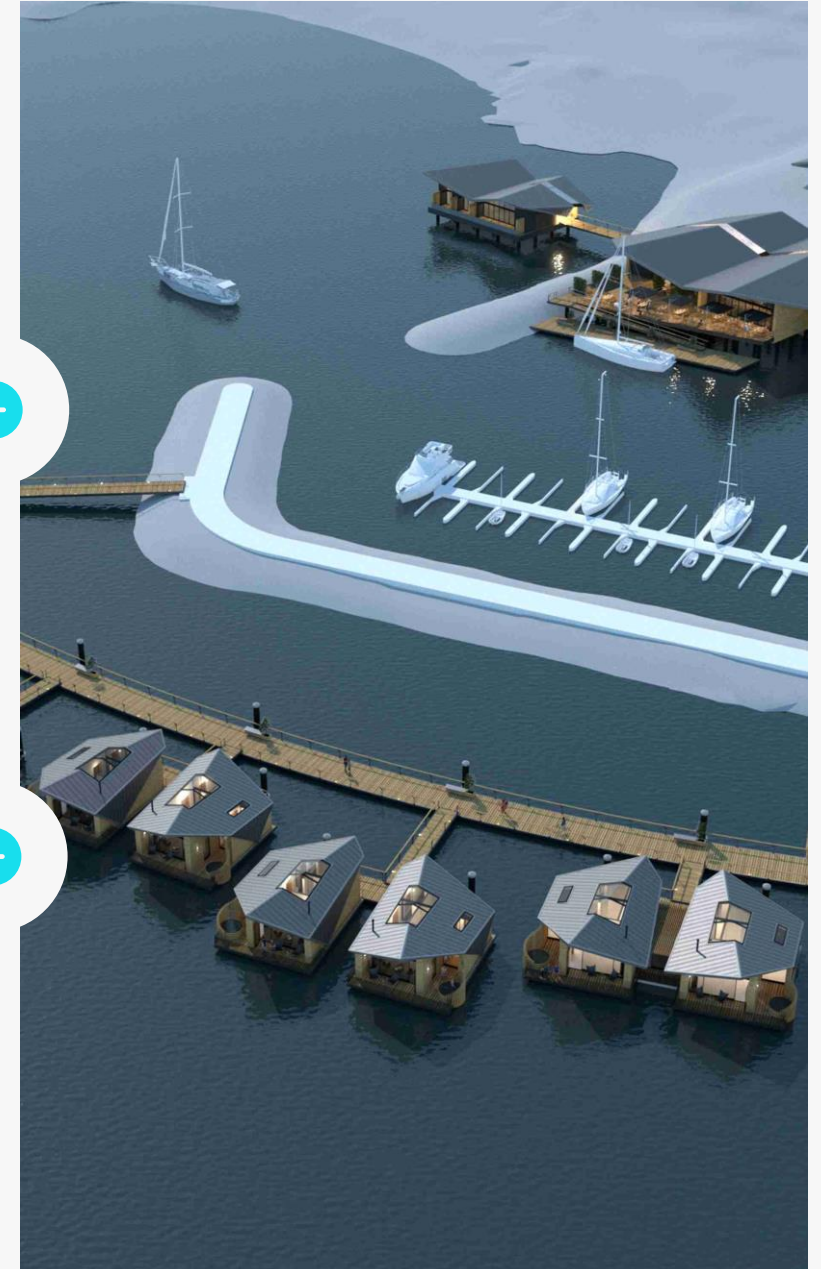
Senja Adventure Eco-retreat

Our client's vision was to create the first floating hotel experience in the Skaland area. The style of the building was inspired by local Nordic architecture, but as most of the hotel floats, this allowed for a new and unconventional interpretation of the style to further set it apart from the competition. Conventional archetypes of the existing buildings were reinterpreted in dynamic forms and shapes that enhanced the uniqueness of the destination.

The natural surroundings in this remote and relatively unspoilt location acted a major advantage of the site and was emphasized in the experience of the built structures. The seasonal changes and the climatic variations required elegant and non-intrusive solutions to account for midnight sun in summer and polar night in winter. The phenomenon of the Aurora Borealis is a major attraction for the region and ways of incorporating it in the architecture were taken into consideration in the design of the main public spaces as well as the guest units.

Facilities:

- Welcome and reception areas
- Dining Area
- Bar
- Guest lounge
- Spa and Wellness zone
- Back of house spaces





Saudi Arabia

Khairah Mountain Lodge

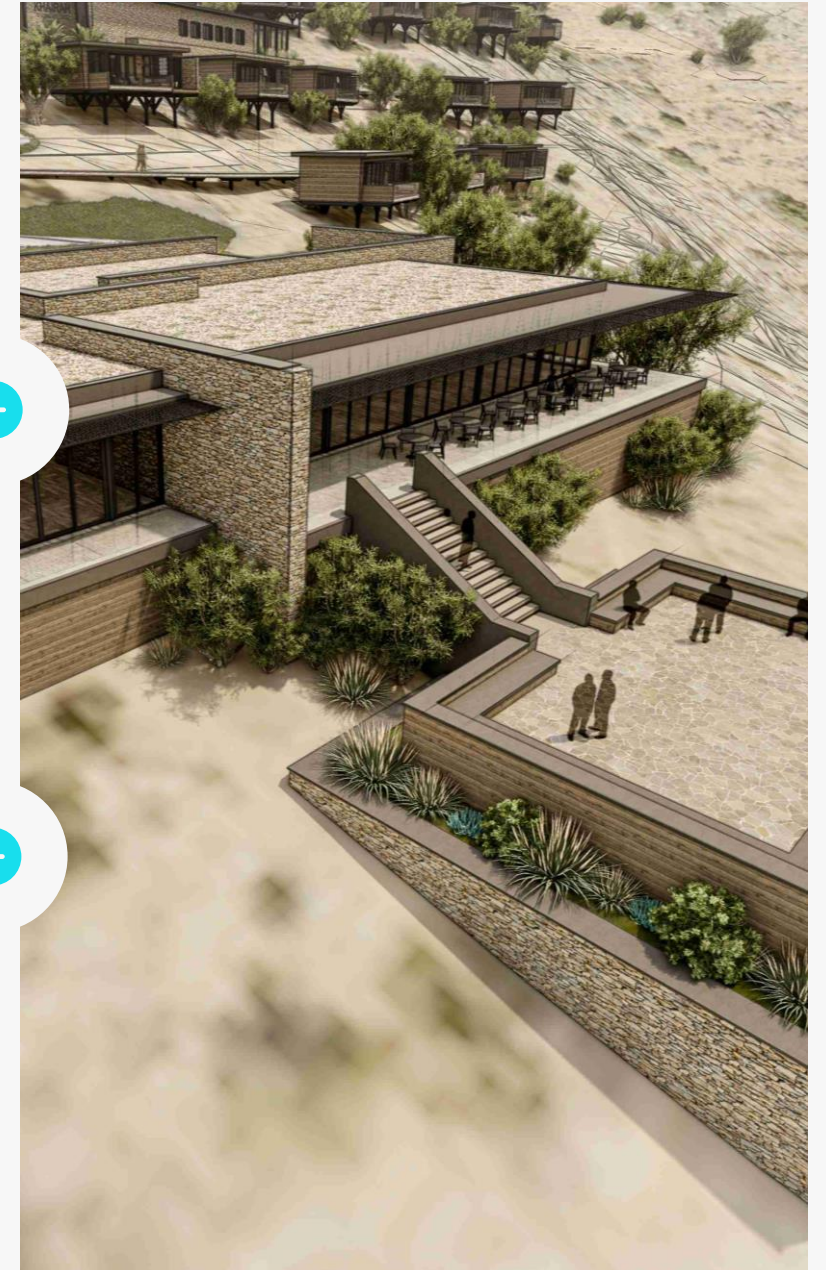
Our client's vision was to create a mountain lodge and an adventure themed destination in the region of Al Baha in the Kingdom of Saudi Arabia which would act as a catalyst for adventure tourism and eco conscious hospitality in the region.

The style of the buildings showcases a fresh and modern interpretation of the Al Baha style which is rooted in the context while conscious of the hotel trends around the world.

The natural surroundings and local culture of the region had a significant impact on the design, with the intention of always connecting the guests with the epic views of the landscape. The topography of the site also presented an opportunity to create a dramatic setting with the lodge spaces cascading down the hillside to form levels of activity that are connected via walkways. The local natural resources on site were also integrated into the design to further reinforce that the project is formed of Al Baha itself.

Facilities:

- Reception and arrivals spaces
- Relaxation lounges
- Children's play area
- Food and beverage offerings
- Outdoor activity spaces
- Spa and wellness area
- Back of house spaces





Saudi Arabia

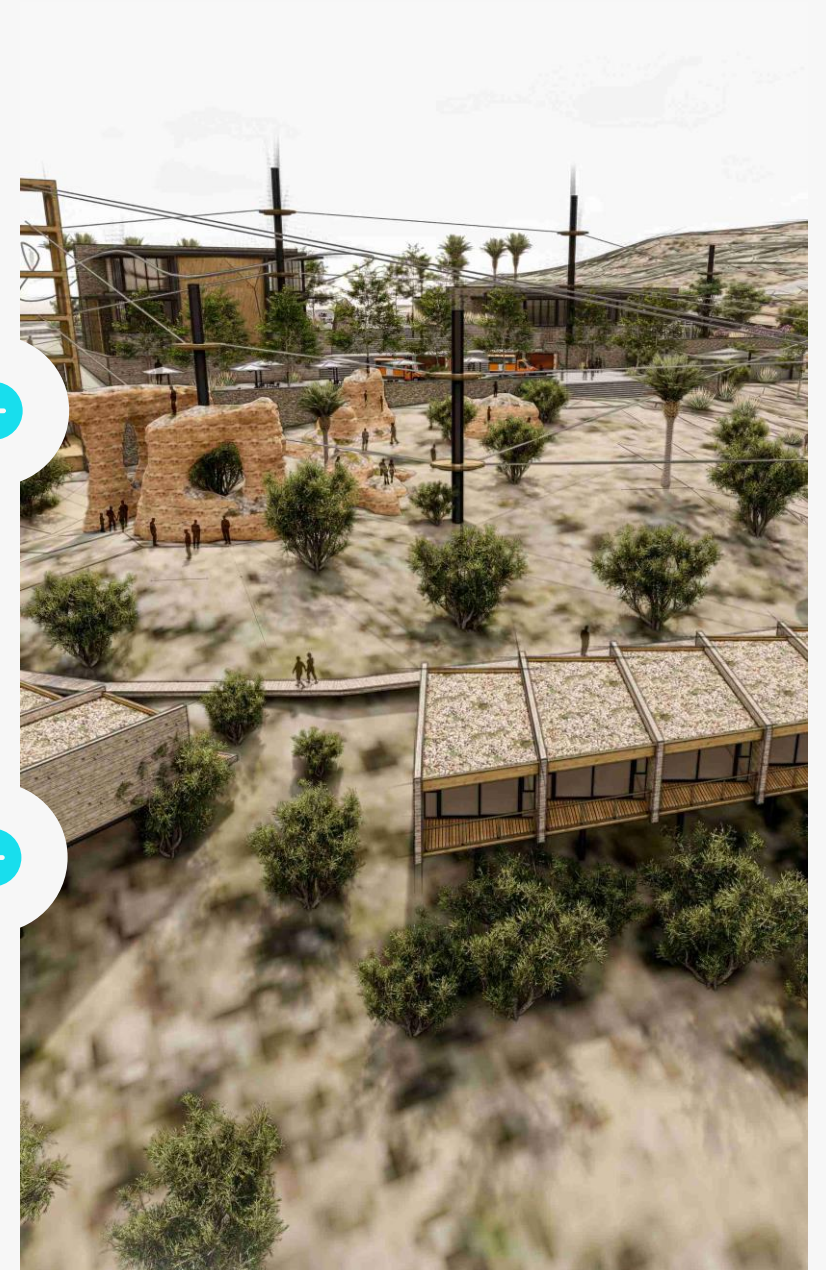
EBDA Adventure Park, Al Baha

Our client's vision was to create a mountain lodge and an adventure themed destination in the region of Al Baha in the Kingdom of Saudi Arabia. The Adventure Park will draw visitors seeking active exploration and engagement with the epic natural landscape of the mountains.

30 Adventure lodges were incorporated on the site, situated on the lower edge of the site floating above the rock formations facing the views. The lower slopes of the site below the public terrace were left open for the activity areas to use for equipment and circulation. Where possible, movement and action is intertwined through the site so that the energy of the Adventure Park circulates around, over and under the functional spaces.

Facilities:

- Arrival plaza
- Welcome and discovery centre
- Adventure café area
- Children's play area off café area
- Mountain bike pump track start
- Adventure zones interspersed among the functional buildings to engage with the visitors
- 8 activity zones – high ropes course, adventure tower climb, free fall, bouldering wall, zip coaster, double zipline and BGSA Train Like Bear Concept





UAE

Grand RAK, Al Marjan Island

Winners of the Grand RAK Competition.

In line with the key criteria set out by the Grand RAK competition the form of the aesthetic of the hotel resort must be instantly recognizable around the world and unique to Ras Al Khaimah and the UAE region. The design was rooted in fundamental principles of Arabian architecture that has been established over centuries but mistakenly modern in execution and appropriate for the modern vision of Ras Al Khaimah to compete on a global stage.

Our team won this competition creating a concept built upon innovation and experiential travel. Sustainable infrastructure formed an integral part of the design which was in line with the competition's key principles.

Facilities:

- Arrival courtyard
- Communal swimming pool & seawater fed tidal pools
- Private yacht marina and marina terrace
- Food and beverage facilities
- Outdoor entertaining area
- Beach lounge & bar
- Kids activity centre
- Coral conservation & interaction site
- Water sports & diving area





Ancillary Services

Conservation Consulting

+ Members of the Terra Nova team have worked alongside the Gardiner Family on many more rewilding projects, conservation initiatives and eco-tourism ventures in the 30 years.

Start creating your vision with us

Terra Nova was founded by a team of professionals who for decades worked alongside renowned conservationist and hotelier, Adrian Gardiner.

The Gardiner Family has taken the lead on many more rewilding projects, conservation initiatives and eco-tourism ventures in their 30 years of active development.

Through this association, learnership and guidance, Terra Nova and their partners have homed in on their skill to provide effective guidance, frameworks and master plans centred around land and sea conservation. This includes land restoration, wildlife management and rewilding initiatives.

Consulting services

- Environmental management planning
- Wildlife management planning
- Game/nature reserve development
- Environmental impact assessment
- Rewilding/biodiversity modelling
- Game capture/game trading

[Portfolio and more >](#)



Brand Entertainment Experiences

+ With roots in talent management and adventure brand licencing

Start creating your vision with us

With roots in talent management, we create bespoke experiences to enhance a product offering and market visibility.

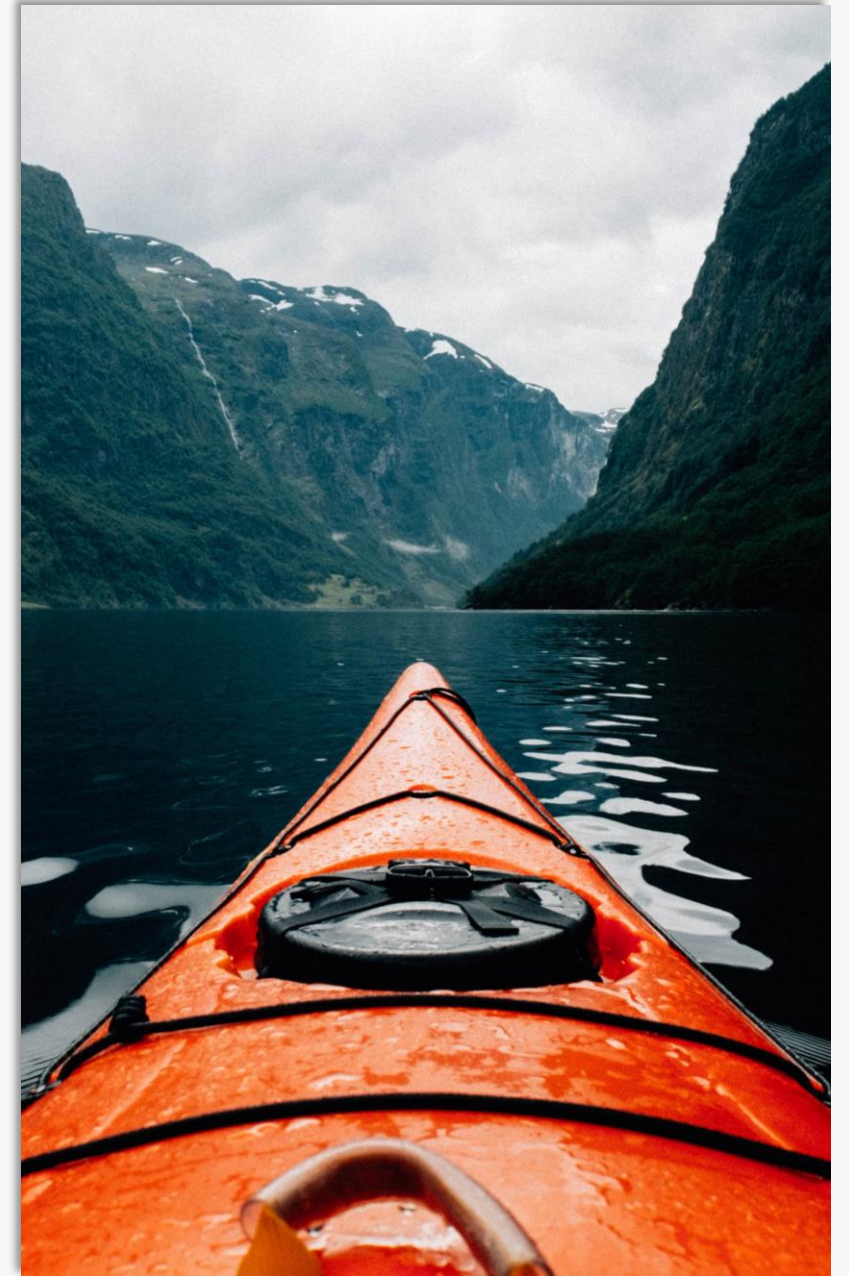
Terra Nova's areas of expertise include, brand entertainment experiences, strategic partnerships and location-based entertainment solutions for clients around the world.

We seek to proactively identify strategic opportunities in these key areas and to harness untapped value in the marketplace, bringing together best-in-class players with unique synergies.

Consulting services

- Talent management
- Product curation
- Product development
- Location based entertainment
- Theming
- Storyboarding

[Portfolio and more >](#)



Film Production

+ Bringing stories to life, from script to screen, to everything in between

Start creating your vision with us

The breadth of our capabilities ranges from TV and media projects to technical recces, location scouting, adventure design and even safety rigging and equipment hire. We offer an independent, personal service with the highest quality results that are guaranteed to deliver unique solutions to complex client problems.

Terra Nova is a full-service film production company that offers a wide range of services, from pre-production to post-production, to bringing creative visions to life and deliver high-quality films for clients.

Film production services

- Pre-production services
- Production services
- Post-production services
- Distribution & marketing services
- Equipment rental
- Sound recording
- Pre-and-post sound service
- Special effects & animation
- Production management & co-ordination

[Portfolio and more >](#)





TERRA
NOVA

www.terra-nova.group